

BURLEY PARISH COUNCIL

Elected to represent the residents of Burley-in-Wharfedale, Stead and Burley Woodhead

Newsletter No 9

October 2008

Introduction

Welcome to our autumn newsletter. Since our last edition Burley has been granted Fairtrade status and we include a report on this. We thank the group which worked hard to achieve this status and the commitment of businesses and organisations which made it possible. May we encourage those who have not yet signed up to using Fairtrade products to consider doing so.

As usual the newsletter is delivered shortly before the Neighbourhood Forum. The newsletter offers brief information about activities but the Forum provides the opportunity to hear more and to contribute to discussions about key issues. If you regularly attend these meetings perhaps you can encourage someone who hasn't been before to join you.

The AGM of the Burley in Wharfedale Trust takes place during the Forum meeting. Bruce Speed will be relinquishing the Chair after 7 years and Mike Harris who has given long service to the Trust as Secretary and Treasurer is leaving the village. BPC would like to express its appreciation of the many contributions they have made to village life and extends its best wishes for the future.

As ever we give special thanks to the large number of volunteers who in many ways help to make the village a good place to be.

Where the Parish Council is concerned we especially rely on the people who deliver the newsletters and who delivered the Burley Handbook and the Saturday morning working group which helps to keep the village green

and other areas looking good. This group meets on the last Saturday of the month between 10 and 12. More members would be most welcome.

Finally we would very much like to have your ideas on the proposed summer festival, described on page 8, and offers to join an organising group.

Sylvia Tilford
Chair, Burley Parish Council

Neighbourhood Forum

The next Neighbourhood Forum is on Thursday 16th October 2008 at the Queens Hall, Burley, at 7.30pm.

This is your chance to find out about projects and plans for Burley and to give your views and opinions on any local issues to representatives of Bradford Council and your Parish Council.

Included in the next Forum will be:

- Proposals for a tree management scheme on the Village Green by Eric Waterworth from Bradford Council
- Unrecorded footpaths in Burley. Fiona Plane, Area Rights of Way Officer, will provide information and listen to your suggestions about local footpaths that might become registered as rights of way
- Report on the work of the Friends of Ilkley Moor
- Report by Neighbourhood Policing Officers
- AGM of Burley in Wharfedale Community Trust
- Update from Burley Parish Council
- Open Forum when YOU can raise concerns and issues

Burley Handbook

More than 3,000 copies of the Burley Handbook were distributed free of charge to every household in Burley over the summer. The Parish Council offers its thanks to the many volunteer distributors for their time and efforts in delivering the handbooks.

The Parish Council would also like to thank all the advertisers and contributors to the handbook especially to Dennis & Margaret Warwick who wrote the articles on the history of Burley House and Burley Hall; and to Mike and Nicky Harris who contributed to the updating of the handbook and who provided the map in the centre of the handbook.

Inevitably with such a large publication we have become aware of one or two typos which we ask you to note:

Page 49 Philip Davies, MP.

Contact him at 76 Otley Road, Shipley

Page 86 Sally's Ironing Service

Contact telephone number 864557

The more sharp eyed amongst you may have spotted the absence of one of our Parish Councillors in the photograph on page 3. Cllr Palmer was unavailable on the day the photograph was taken.

If, for any reason, you did not receive a copy of the handbook please contact Jo or one of the Parish Councillors and a copy will be delivered to you. If you are moving house please leave your handbook for the new residents. If you know of anyone new to the village who does not have a copy of the handbook then please encourage them to contact the Parish Council for a copy.

Water Feature

Energy prices continue to rise and as last year the running hours of the water feature on the Village Green will be reduced during the winter months. This allows the water feature to run for extended hours during the

summer months when more people are using the Village Green and still allow the total running costs of the feature to be within budget for the year.

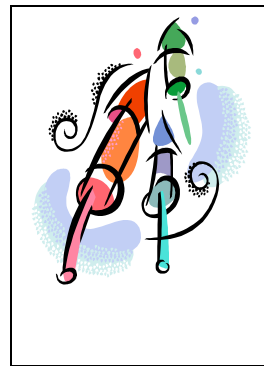
During the last year the Parish Council has been looking to find sustainable means of generating electricity to power the water feature. Discussions are still on-going.

Pollution of Water Courses

Over the summer there were at least two instances when volatile liquids were poured into drains or water courses in the village. This is harmful to local vegetation and wildlife as well as potentially to dogs and humans.

Please refrain from pouring any chemicals, paints or other noxious substances down drains or into water courses. Most liquids can be safely disposed of at the Ellar Ghyll recycling centre.

Fireworks



The Burley in Wharfedale Scout Group will be hosting a bonfire and firework display on Saturday 8th November.

The event will start at 6.30pm on the field outside the Scout Hut on Peel Place. The bonfire will be lit at 7pm with fireworks at 7.30pm. All welcome.

Please note that the Fireworks Regulations of 2004 prohibit the use of fireworks after 11pm at night, unless at organised events or on a permitted fireworks night:

- 11pm to midnight on 5th November
- 11pm to 1am on Chinese New Year
- 11pm to 1am on Diwali
- 11pm to 1am on 31st December

Parking on Footpaths

Please give consideration to people using the footpaths around the village. If you park your vehicle on part, or all, of the footpath you may be forcing wheelchair, pushchair and mobility vehicle users off the pavement and onto the road.

Burley in Wharfedale Community Trust seeks new Treasurer

The AGM for the BWCT will take place at the Neighbourhood Forum on 16th October 2008.

The current Treasurer, Clive Myatt, will be standing down and a replacement is being sought. If you would like further information on the role or wish to offer yourself for the post then please contact Mr Bruce Speed, Chair of BWCT on telephone number 862273 or via email: brucespeed@waitrose.com.

Planning Guidance and Changes to Permitted Development

From 1st October 2008 new government legislation came into effect that changes the rules on permitted development i.e. development that can be undertaken without the need for a planning application to be submitted to the local planning authority.

Bradford Council has yet to issue any specific guidance on this subject. If you are in any doubt whether you need planning permission then you should consult with your local planning office: Ilkley Planning Office, Town Hall, Ilkley, LS29 8HB. Telephone number: 01274 434605.

Bradford Council publishes various guides to planning rules and regulations. Many are available on its website:

www.bradford.gov.uk or from Ilkley Planning Office.

There are different rules on what you can or can't do to your house depending on whether your home is located in the conservation area or is a listed building. For further information on homes in the conservation area please consult: *A Homeowner's Guide to Preserving and Enhancing the Character of Your Conservation Area*. If you are in any doubt then please consult the planning office.



The Lawn

Work is well underway on the redevelopment of The Lawn by Incommunities (formerly Bradford Community Housing Trust). The estimated date for completion is March 2009.

There will be 29 units available in total; in the conversion of the old building:

- five, 2 bed units available to rent for general needs;
- nine, 1 and 2 bed units for shared ownership for general needs;

in the new building:

- five, 2 bed units for over 55s for rent;
- ten 1 and 2 bed units for over 55s for shared ownership.

Any enquires for shared ownership should be made to Michelle Rowntree on 01274 254127 who will send out an application form.

Any enquiries for rented accommodation should be made to Elaine Reilly, Neighbourhood Officer, 6-14 Devonshire Street, Keighley BD21 2DG, telephone 01274 257770.

A book for your friends and family this Christmas?

Burley Local History Group is publishing a new book containing over 150 photographs and maps. It illustrates the changes in our village and is called:

Burley in Wharfedale Then and Now

It should be ready by mid-October and available in the Parish Centre, Post Office and Library price £7.50.

WATCH OUT FOR THE POSTERS

The annual Christmas market and switch on of the village lights will take place on Saturday 29th November.



Christmas Lights

The Christmas market is organised by Burley and District Chamber of Trade and will run from 2pm until 5.30pm with Main Street closed to through traffic.

The Christmas lights are organised and funded by Burley in Wharfedale Community Trust. Work starts on Saturday 1st November on putting up the lights and continues on every Saturday until the lights are switched on. Volunteers are welcome and meet each Saturday at 9am outside the Grange on Station Road or at any time during the morning if you have free time to help. Everyone is welcome, no special skills required. Contact Tom Sumner: 01943 862940 for further details.

The lights will be switched on at 4.30pm on Saturday 29th November 2008 outside The Grange.

Station Road/Moor Lane

The recent problems with flooding under the railway bridge have been well reported.

Since the most severe flooding in August Bradford Council has worked hard to resolve many of the issues at this site, not least of which was the removal of the space hopper that was helping to block the culvert! There are on-going issues that are the responsibility of other organisations and it is hoped that these will be resolved in the near future.

During the last period of heavy rainfall the problems were noticeably less severe but work will not start on the chicane until Traffic & Highways Officers are satisfied that the issues at this site are resolved.

At Home Services for Over 50s from Anchor Trust

The Parish Council has been contacted by At Home Services from Anchor Trust to help them publicise their new scheme for the over 50s.

Based in Wetherby, At Home Services is a not-for-profit provider of tradespeople to carry out jobs in the home and garden. The services available from At Home Services include electrical, plumbing, building and gardening work. They will also help with general DIY tasks and offer personal care services if required. The charges are described as competitive and there is no call out fee.

For further details please contact At Home Services on: 08000 50 2 100.

Please note that by publicising this service the Parish Council is in no way providing a guarantee for any of the services offered.

Fairtrade Status for Burley



Most people will be familiar with Fairtrade produce either through Traidcraft or other branded products displaying the Fairtrade label (left).

Fairtrade is about paying producers, in the developing world, a fair and sustainable price for their goods, enabling any surplus monies plus the additional Fairtrade

premium to be re invested in supporting and financing their communities with educational, commercial and welfare needs.

Burley in Wharfedale gained Fairtrade Village status in July this year. The recognition is awarded by the Fairtrade Foundation to cities, towns and villages who actively promote the use and sale of Fairtrade goods in their communities through retail outlets, cafes, restaurants, churches, schools and other organisations.

To gain recognition the village had to achieve a number of goals laid down by the Fairtrade Foundation. Burley Parish Council supported the application for Fairtrade status by passing a resolution in November 2007 and appointed Cllr Keith Dale to represent the parish council on a steering group, charged with making the application.

The steering group has produced a local directory detailing outlets and organisations selling or using Fairtrade goods. A much more comprehensive directory is produced by the Bradford District Fairtrade group.

Both are available from Burley Library and the Co-op store. *For more information on Fairtrade visit www.fairtrade.org.uk.*

Burley Friends Social Club

A new mutual support social club has been formed for Burley people who have been widowed or divorced.

The club meets at St Mary's Parish Centre on the second Tuesday of the month from 10am to 12noon. The next meeting will be on 9th October. A programme of activities is now being planned and new members will be welcome.

For more details contact Richard on 864269 or 862602 or Barbara on 864118.

Overhanging Trees & Shrubs

Thank you to all those residents who have taken on board comments in previous newsletters or letters from the Parish Council about overhanging trees and shrubs and made efforts to cut back the vegetation on their properties.

Overhanging shrubs and trees impede pedestrians and reduce pavement space. The rate of growth this year of many of the most common hedging plants and shrubs has been very great. Please ensure that over the winter months you take the opportunity to cut back any vegetation that may be posing a problem for others.

If you have concerns about overhanging trees and shrubs next to the highway then please contact Bradford Council on 01274 431000.

UPDATE ON THE WORK OF THE BURLEY VILLAGE WILDLIFE GROUP

by Cllr Peter Riley

The Burley Village Wildlife Group has been delighted with the results of volunteers' hard work in recent years at the Sun Lane Nature Reserve. This year's show of wildflowers has been the best ever, helped no doubt by the absence of any period of drought this summer! The down side of the damp summer however has been the reduced numbers of insects - an effect no doubt also linked with last summer's torrential rains at a critical time. With so many insect species in decline across the UK we just have to hope that there are still sufficient numbers for them to bounce back in a favourable summer. In the meantime the Working Parties will continue with their normal winter work of clearance and other maintenance in readiness for next year. There have been many favourable comments from local walkers, not least for the explanatory flower signs around the Reserve - such support is welcome and much appreciated. Our thanks are also due to the team of local dog walkers who not only clear their own dog droppings but also that of other dogs whose owners are too anti-social to bother.

The by-pass roundabouts and verges put on a wonderful display from February through to July assisting the Parish Council in fulfilling its legal responsibility to both maintain and enhance biodiversity within the village. Unfortunately Bradford Council was not able to cut at the preferred time which would have been better for sight-lines at

junctions and means the anticipated late-flowering may not occur this year.

Nonetheless the Council has generally been helpful in this area of our work and we will continue to liaise with its officers to try to achieve a more reliable arrangement in future years.

On the subject of biodiversity, the Group has had great success in getting on top of the himalayan balsam problem around the village. This annual, non-native, species was threatening to overwhelm our watercourses and verges swamping our native vegetation and causing troublesome erosion. If you see any, or think you may have but are unsure, please do not hesitate to contact Cllr Riley who will take appropriate action.

Finally, a plea from the Group to all gardeners - please don't try to be too tidy going into the winter! In general our gardens now have far more biodiversity than the surrounding countryside and effectively function as essential mini-nature reserves. Why not leave some unkempt corners, log and scrub piles, uncut stems and seedheads etc - all these actions will help our over-wintering wildlife. In addition do think carefully before applying chemicals in your garden. Pesticides and insecticides in particular are having a devastating impact on our insect populations and therefore affecting the whole of the natural food chain.

If you want more advice on wildlife gardening and/or would like to consider joining our friendly group of volunteers please contact Cllr Riley on 862916.

Police Contact Point

The Police Contact Point is located in the Queen's Hall. Opened last year it gives residents of Burley a twice weekly opportunity to talk face to face with Police Officers and volunteers about a variety of Police and Council issues.

Police contact points are a joint project between West Yorkshire Police and Bradford Council to improve the quality of service delivered across the Bradford district. Access to a range of Police and Council services is available through the Contact Point.

The Burley Contact Point provides residents with information and assistance with non-urgent policing issues from anti-social behaviour to parking issues and fly-tipping. If you need to make a complaint or wish to make an enquiry related to Bradford Council services then you can speak to a volunteer at the Contact Point and they will help forward your query to the most appropriate department at Bradford Council.

The Contact Point in Burley currently has two volunteers: **Mike Moran** volunteers once a week for 2 hours. Although Mike was formerly in the Rhodesian police, no prior policing experience is required to volunteer. Mike says that he enjoys working at the Contact Point, meeting people and becoming involved in community life. Through the Contact Point he feels that he gives something back to the community. Mike also helps with the Community Speedwatch Programme. **Victoria Bilbie** also volunteers once a week. Now retired, Victoria had been involved in Neighbourhood Watch locally. She is now happy to give some of her time to help people in Burley through working at the Contact Point.

Could you help at the Contact Point? If there are more volunteers then the Contact Point could be open more frequently. If

you are interested then please contact PC Michael Exley on telephone number: 01274 474772 or via email: michael.exley@westyorkshire.pnn.police.uk. You will be sent an application form and will be asked to return it and attend a short interview. All volunteers are subject to a Criminal Records Bureau check.

Police and Community Contact Point

Queens Hall

Main Street

Burley in Wharfedale

LS29 7BT

Tel 01943 864254

Email - contactwharfedale@yahoo.co.uk

Open: 5.30pm - 7.30pm Thursday

9.30am - 12.00pm Friday

An update on crime and policing issues will be provided by members of the Neighbourhood Policing Team at the Neighbourhood Forum on 16th October 2008.

Police Surgeries

Police Community Support Officers are available on the following dates to discuss any issues or concerns you may have.

| Date | Time | Venue |
|---------------------------|--------------|-----------------------------|
| 9 th October | 10-11am | Burley Library, Grange Road |
| 17 th October | 9.30-10.30am | Queens Hall, Contact Point |
| 23 rd October | 6.30-7.30pm | Queen's Hall, Contact Point |
| 30 th October | 10-11am | Burley Library, Grange Road |
| 7 th November | 9.30-10.30am | Queen's Hall, Contact Point |
| 13 th November | 6.30-7.30pm | Queen's Hall, Contact Point |
| 20 th November | 10-11am | Burley Library, Grange Road |

Summer Festival

The parish council has raised the idea that a one week festival be held in the village during August, 2009. If successful this could become a pattern for future years. It would consist of a wide variety of activities to meet the interests of both young and older members of the community. The idea is that existing groups in the village would be invited to offer one or more activities within this week which would form the core of the programme alongside a number of activities designed specifically for the festival week.

With this summer's weather in mind we would seek to build a programme with a balance between indoor and outdoor activities. The festival would be facilitated by a group made up of volunteers from the village and parish councillors. From an initial consultation with a few groups and individuals in the village we sense that there would be support and a variety of activities has already been suggested. We need now to gain a fuller idea of the level of interest before making the decision to go ahead. A meeting will be held on Thursday 23rd October at 7.30pm, at Burley Oaks Primary School to discuss the idea in further detail.

If you have ideas to offer do please come along to this meeting or, if you cannot attend on this date please contact one of the parish councillors or the parish clerk with your ideas. Our contact details can be found on the this page of the newsletter. We would hope to form the planning group towards the end of October. You may have questions about the time commitment that would be involved in joining the committee. It is not our idea to be too ambitious in a first year. We also do not want to plan an event which is heavily dependent on a lot of work by a few people but one where lots of people would be involved with 'many hands making light work'.

How to contact the Parish Council

If you have an enquiry about the work of the Parish Council or wish to raise any matter relating to the Parish please contact the Parish Clerk, Jo Griffiths. Telephone number: 07971 772181 or email: parishclerk@burley-in-wharfedale.org.

Every Tuesday morning from 10am-12noon, Jo or a member of the Parish Council will be available at St Mary's Parish Centre on Station Road to answer any queries you may have.

All meetings of the Parish Council are open to the public. Details of the times and dates of meetings are listed on the website and on the village notice boards: in the library; at the bottom of Station Road; on the Village Green and at Burley Woodhead.

Agendas are posted on the main Parish Council notice board in the library and on the village website. Copies of minutes are available in the library and on the website.

Every meeting has a slot for public participation and residents' views on any subject are welcome. Any comments regarding prospective planning applications are particularly welcome, please forward a copy in writing to the Parish Clerk.

Burley Parish Council is made up of nine councillors and they may be contacted as follows:

| | |
|---------------------------------------------|--------|
| Sylvia Tilford, Chair | 863218 |
| Keith Dale, Vice Chair | 862662 |
| Kathryn Forrest | 864097 |
| John Horton | 863438 |
| Peter Jenkins (Chair of Planning Committee) | 863131 |
| Caroline Jones | 863857 |

| | |
|----------------------------------------------------------------|--------|
| Matt Palmer | 863790 |
| Peter Riley | 862916 |
| Mike Walker (Chair of Maintenance and Allotments Committee) | 430329 |